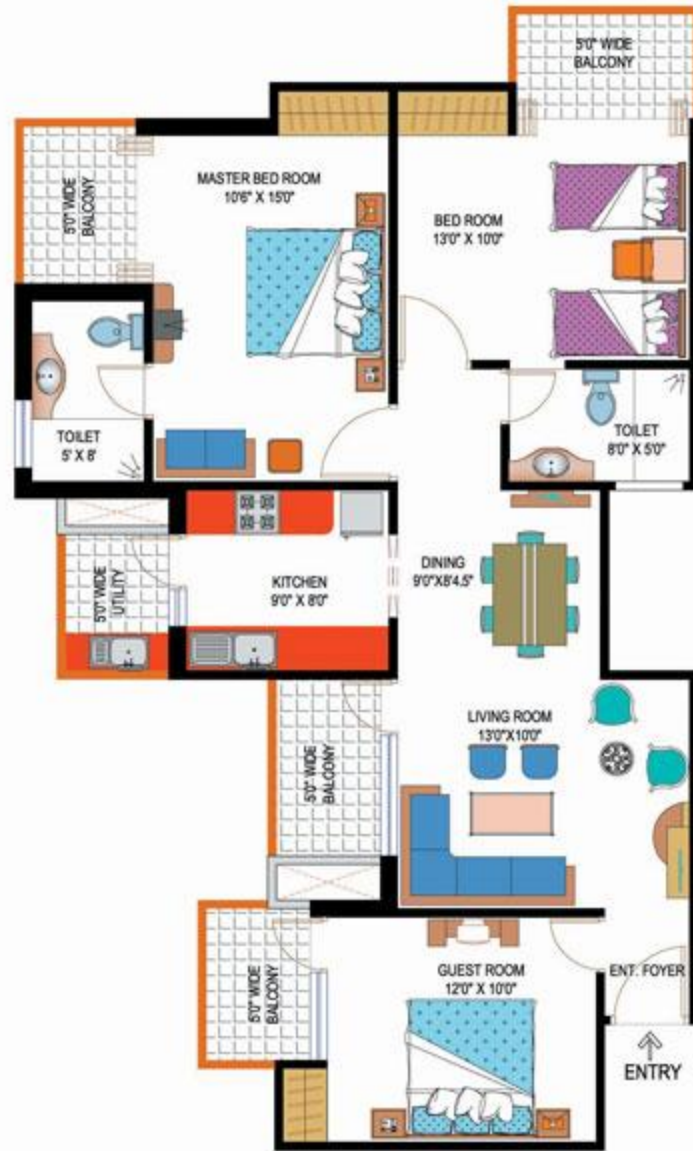
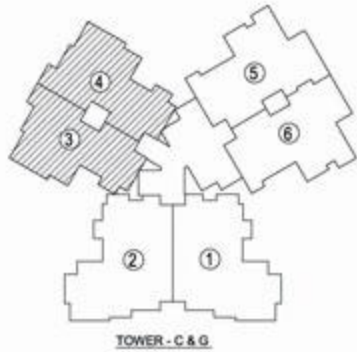


TOWER - D & E
2 Bed + 2 Toilet(type-2)
Saleable area - 1140sq.ft.

* All above features and layout are tentative and are subject to change without any prior notice. These are purely conceptual and constitute no legal offerings. Balconies are subject to change as per elevation drawings.

PROJECT :- **AMRAPALI SAPPHIRE AT SECTOR - 45, NOIDA**

ARCHITECT :- **VAIBHAV JAIN & ASSOCIATES**
195, RAM VIHAR DELHI - 110092
e-mail - info@nae.co.in



TOWER - C & G
3 Bed + 2 Toilet
Saleable area -1390 sq.ft.

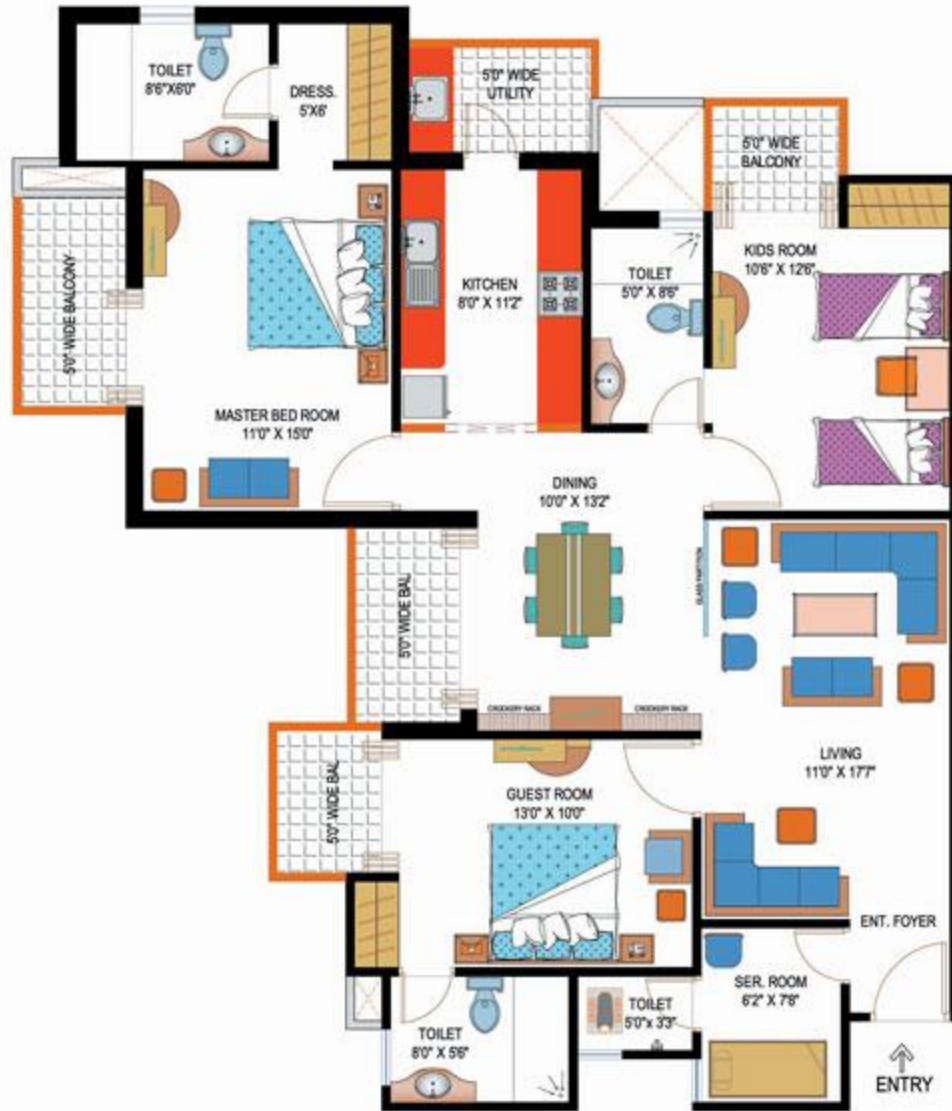
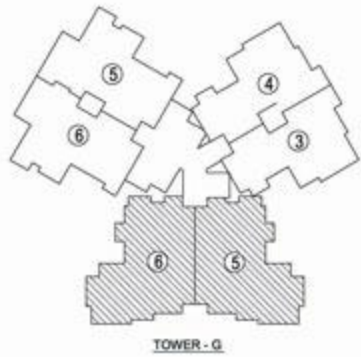
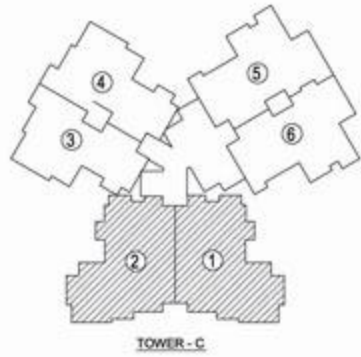
* All above features and layout are tentative and are subject to change without any prior notice, these are purely conceptual and constitute no legal offerings. Balconies are subject to change as per elevation drawings.

PROJECT >

AMRAPALI SAPPHIRE AT SECTOR - 45, NOIDA

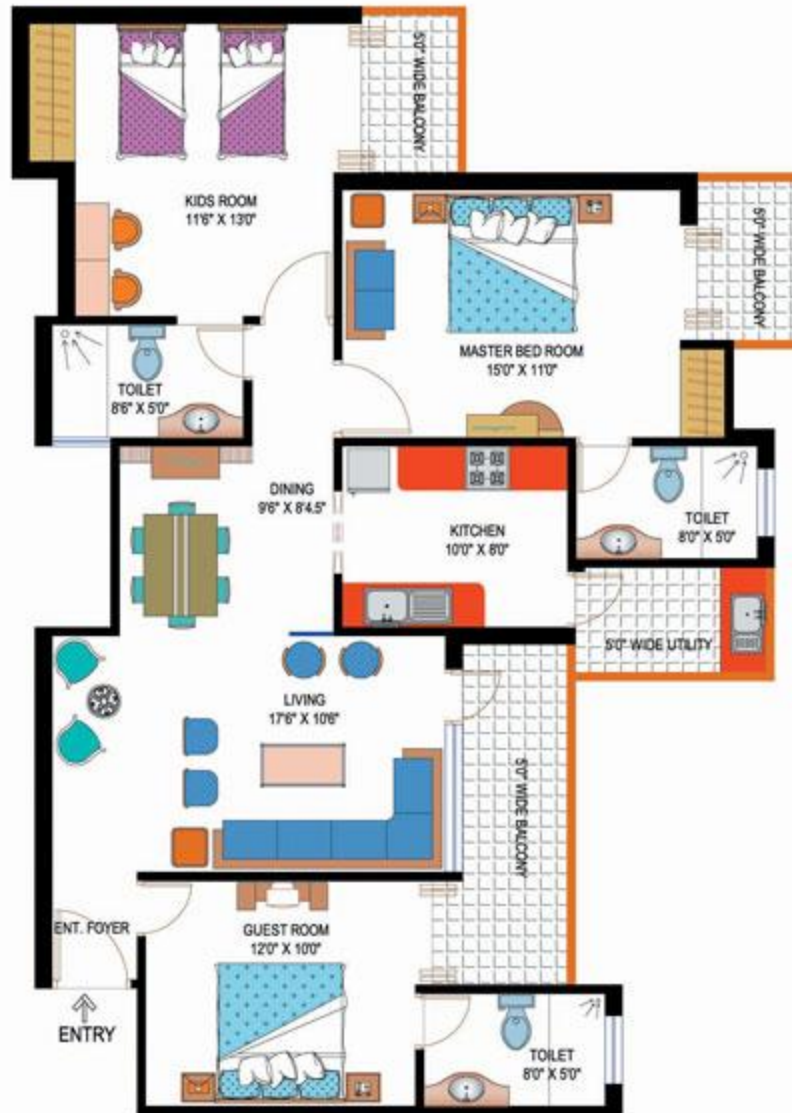
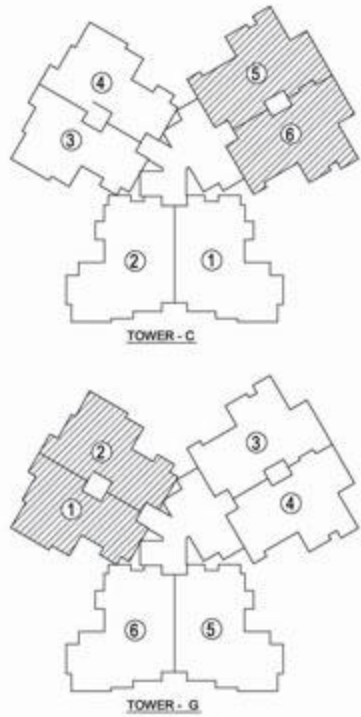
ARCHITECT >

VAIBHAV JAIN & ASSOCIATES
195, RAM VIHAR DELHI - 110092
e-mail - info@nae.co.in



TOWER - C & G
3 Bed + 3 Toilet +servant
Saleable area - 1850sq.ft.

* All above features and layout are tentative and are subject to change without any prior notice. these are purely conceptual and constitute no legal offerings. Balconies are subject to change as per elevation drawings.



TOWER - C & G
3 Bed + 3 Toilet
Saleable area - 1640 sq.ft.

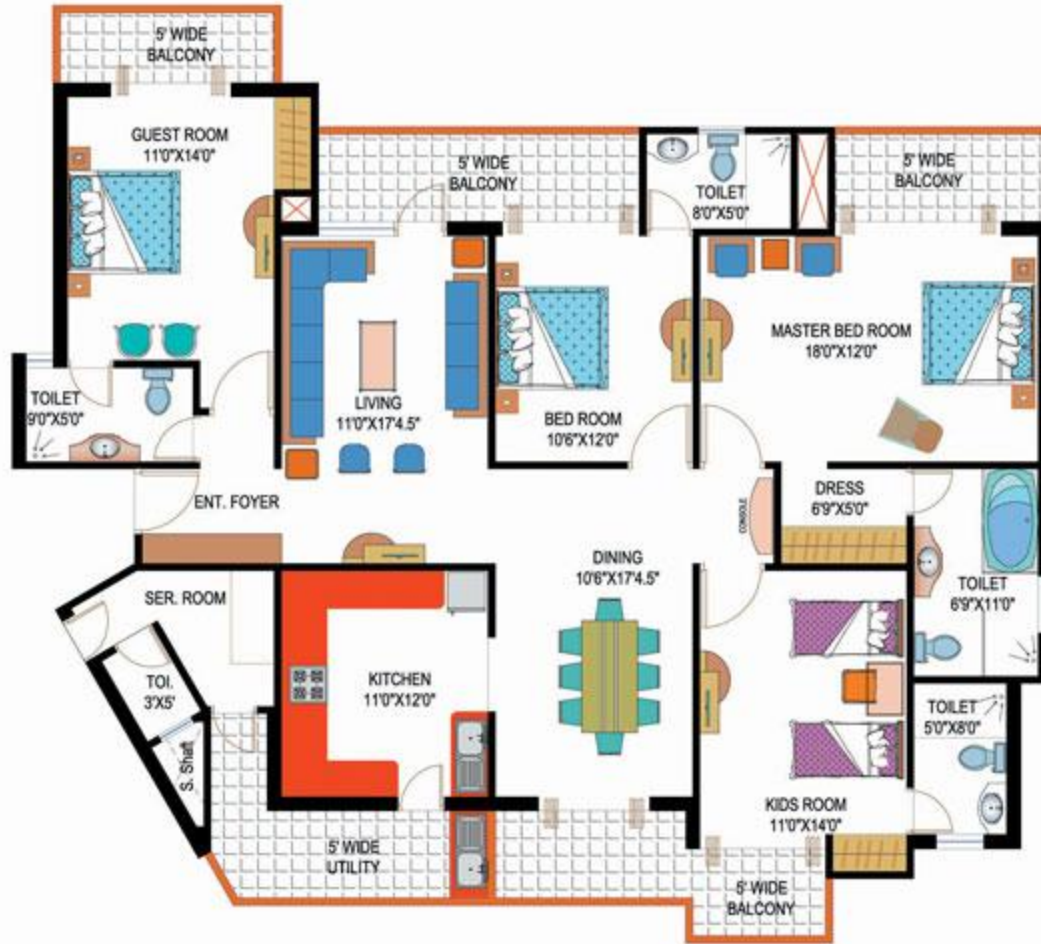
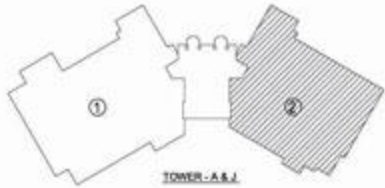
* All above features and layout are tentative and are subject to change without any prior notice. these are purely conceptual and constitute no legal offerings. Balconies are subject to change as per elevation drawings.

PROJECT :-

AMRAPALI SAPPHIRE AT SECTOR - 45, NOIDA

ARCHITECT :-

VAIBHAV JAIN & ASSOCIATES
195, RAM VIHAR DELHI - 110092
e-mail - info@nae.co.in



TOWER - A & J

4 BED + 4 TOILET

Saleable area -

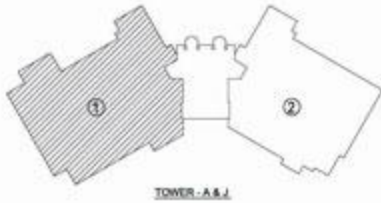
*All above features and layout are tentative and are subject to change without any prior notice. These are purely conceptual and constitute no legal offerings. Balconies are subject to change as per elevation drawings.

PROJECT :-

AMRAPALI SAPPHIRE AT SECTOR - 45, NOIDA

ARCHITECT :-

VAIBHAV JAIN & ASSOCIATES
 195, RAM VIHAR DELHI - 110092
 e-mail - info@nae.co.in



TOWER - A & J

4 BED FAMILY LOUNGE UNIT
Saleable area -

* All above features and layout are tentative and are subject to change without any prior notice. These are purely conceptual and constitute no legal offerings. Balconies are subject to change as per elevation drawings.

PROJECT ->

AMRAPALI SAPPHIRE AT SECTOR - 45, NOIDA

ARCHITECT ->

VAIBHAV JAIN & ASSOCIATES
 195, RAM VIHAR DELHI - 110092
 e-mail - info@nae.co.in

LAYOUT PLAN



LEGEND

1. Entrance Plaza
2. Children's Play Area
3. Meditation
4. Pool side Deck
5. Water Body
6. Landscape Mound
7. Club (s.apt.)
8. Pool (s.apt.)
9. Amphitheatre
10. Barbeque
11. Party Area
12. Main Pool
13. Kids Pool
14. Seating Area
15. Sand Pit
16. Skating Area
17. Tennis Court
18. Badminton Court
19. Basketball Court
20. Gazebo
21. Main Club



Disclaimer:

Green Realtech Projects Pvt. Ltd (www.nirrtigo.com) does not warrant the accuracy, adequacy or completeness of the information presented herein and expressly disclaims liability for any errors or omissions therein. The information presented herein may include data supplied to Green Realtech Project Pvt. Ltd by third parties. Such data may be amended or changed at any time by third parties without notice to Green Realtech Projects Pvt. Ltd. Accordingly; no warranties of any kind, implied, express or statutory are given in respect of the information.