



1 Bed Room (Option 1)  
Super Area = 585 Sq. Ft





1 Bed Room (Option 2)  
Super Area = 585 Sq. Ft

2 Bed Room + 2 Toilet  
Super Area = 805 Sq. Ft





2 Bed Room + 2 Toilet + Study  
Super Area = 920 Sq. Ft

3 Bed Room + 2 Toilet  
Super Area = 1045 Sq. Ft

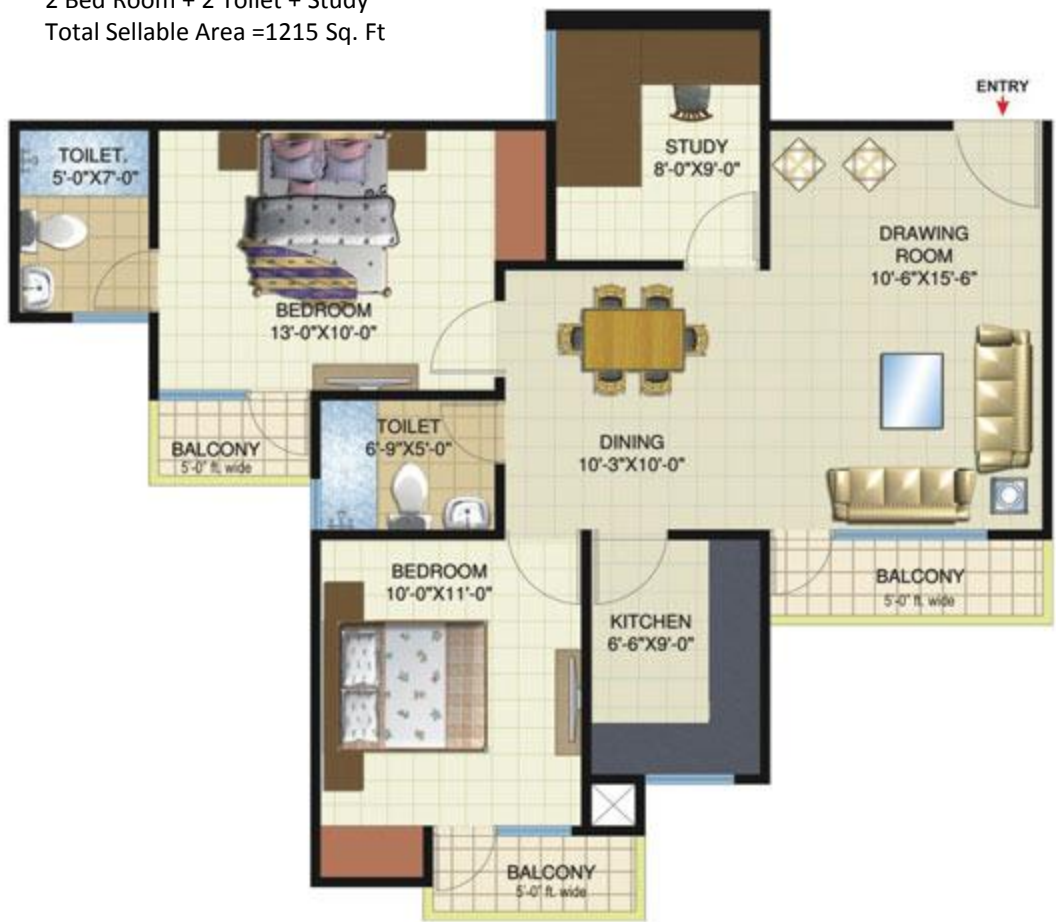




2 Bed Room + 2 Toilet  
Super Area = 1115 Sq. Ft



2 Bed Room + 2 Toilet + Study  
Total Sellable Area =1215 Sq. Ft





3 Bed Room + 2 Toilet  
Super Area =1360 Sq. Ft

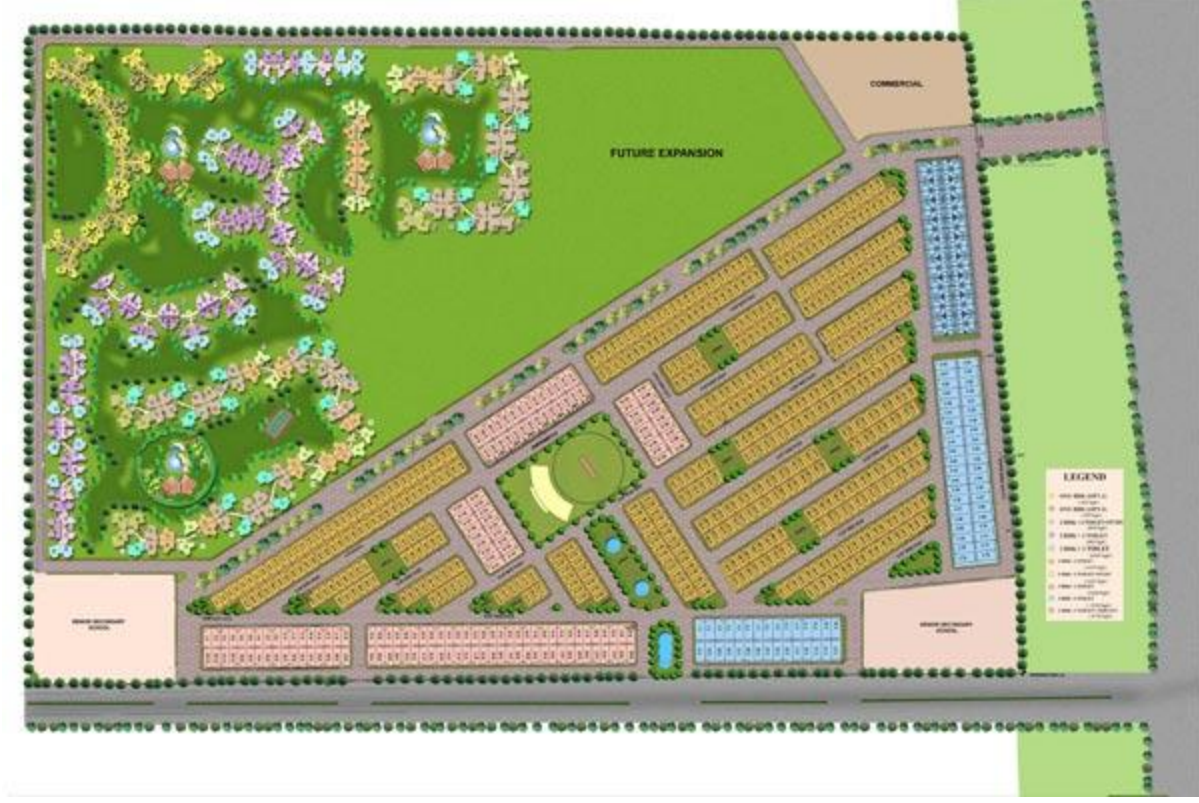


3 Bed Room + 3 Toilet  
Super Area =1530 Sq. Ft



3 Bed Room + 3 Toilet + Servant  
Super Area = 1715 Sq. Ft





**Disclaimer:**

Green Realtech Projects Pvt. Ltd ([www.nirrtigo.com](http://www.nirrtigo.com)) does not warrant the accuracy, adequacy or completeness of the information presented herein and expressly disclaims liability for any errors or omissions therein. The information presented herein may include data supplied to Green Realtech Project Pvt. Ltd by third parties. Such data may be amended or changed at any time by third parties without notice to Green Realtech Projects Pvt. Ltd. Accordingly; no warranties of any kind, implied, express or statutory are given in respect of the information.